



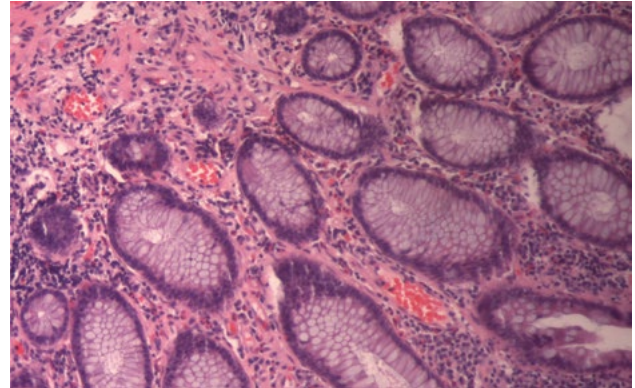
## Histofix® Preservative ready-to-use for clinical diagnostics

3.7-4.0% Formaldehyde solution indicated for use as a preservative/fixative in pathological anatomy.

Available in polypropylene bottles of various sizes, with pre-dosed formaldehyde for rapid, convenient use to avoid the need for bothersome preliminary preparations.

Neutral solution, buffered with sodium phosphate at pH 7 and stabilized with methanol, to prevent potential oxidation phenomena and enhance preservation of the sample to be processed.

Perfect, air-tight seal to ensure high sample stability, plus a grooved base to facilitate handling with gloves and prevent accidental slipping.



Also available in **pink colored** formalin for better visualization of small specimens

Compliance with CE marking requirements for health products used for in vitro diagnostics.



### Main advantages

- **Convenience:** Transparent bottle containing Histofix® Preservative ready-to-use. The label includes all required information about the product.
- **Safety:** No manipulation is required, eliminating any problems associated with product toxicity. Any spillage is avoided owing to the excellent hermetic design of the containers.
- **Quality:** The high quality and stability of our formaldehyde enables effective and reproducible fixation.
- **A wide-range of formats:** Available in different sizes, thus allowing users to select the most suitable size for their samples.

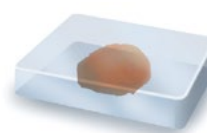
1 Fixation



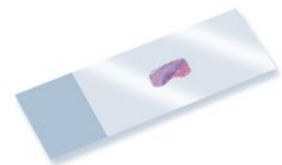
2 Dehydration/  
Clearing



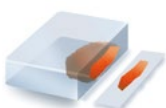
3 Infiltration/  
Paraffin Embedding



7 Mounting



4 Sectioning

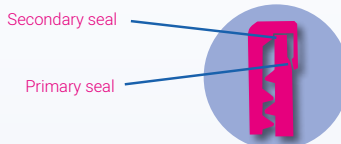


5 Paraffin removal/  
Hydration



6 Staining





Double internal security closure  
The double-lock safety cap guarantees airtight sealing of the sample



The bottles have a grooved twist-off cap for easier opening and closing



The upper part of the container is specially designed to facilitate pouring and prevent dripping on the outside



The bottles have moulded graduation marks every 10 mL

Product code	Formol quantity (mL) *	Units / box	Container information				Container picture
			Graduated volume (mL)	Total volume (mL)	Ø opening (mm)	Height with cap (mm)	
256462.0905 257462.0905 (pink)	10	45	20	25	34	43	
256462.0955	20	44	40	50	45	43	
256462.0962 257462.0962 (pink)	30	45	60	76	45	60	
256462.0961 257462.0961 (pink)	40	45	60	76	45	60	
256462.0967	75	24	120	146	53	78	
256462.0943	125	16	150	250	89	57	
256462.0944	200	12	350	500	90	110	
256462.09149	600	10	—	1200	125	126	
256462.09118	1500	4	—	3100	190	138	
256462.09150	3000	4	—	5300	210	183	

IP-011EN

