



# LABORATORY REAGENTS AND RAW MATERIALS FOR PRODUCTION

[itwreagents.com](http://itwreagents.com)




## The Origin of Our Industrial Character

**ITW Illinois Tool Works Inc. (NYSE: ITW)** is a diversified manufacturing company that delivers specialized expertise, innovative thinking and value-added products to meet critical customer needs in a variety of industries. ITW, with approximately 15.9 billion dollars in global revenues, operates 7 major segments with businesses in 51 countries that employ approximately 46,000 employees. These talented individuals, many of whom have specialized engineering or scientific expertise, contribute to our global leadership in innovation. We are proud of our broad portfolio of more than 19,200 global patents and patent applications.

The foundation of our company is the **ITW Business Model**, a unique and differentiated set of core capabilities and business practices that comprises three key elements: **ITW's 80/20 business process, customer-back innovation and a decentralized entrepreneurial culture.**

Integrity, respect, trust,  
shared risk & simplicity





80/20 Business Process

Customer-Back Innovation

Decentralized entrepreneurial Culture



# The ITW Reagents Division

In 2010, the ITW Reagents division was born integrated by the companies **Panreac Química SLU** (Spain) and **Nova Chimica S.r.l.** (currently **ITW Reagents S.R.L.**) (Italy), and later on by **AppliChem GmbH** (Germany). With the aim of bringing together the experience and know-how of these three well-established companies, the division offers the highest quality and innovative products for analysis, research and production applications.

Nowadays ITW Reagents markets its products worldwide through an extensive distribution network to more than 50 countries under the **PanReac AppliChem brand**.

The division has two production plants in **Darmstadt (Germany)** and **Barcelona (Spain)**. From development, all the way through to commercialization, they offer high quality, scalability, and flexibility of small to large scale production.



**1912** ITW

**1941** Panreac Química

**1980** Nova Chimica

**1992** AppliChem









We constantly control the whole  
lifecycle of our products and the  
legal compliance by our providers





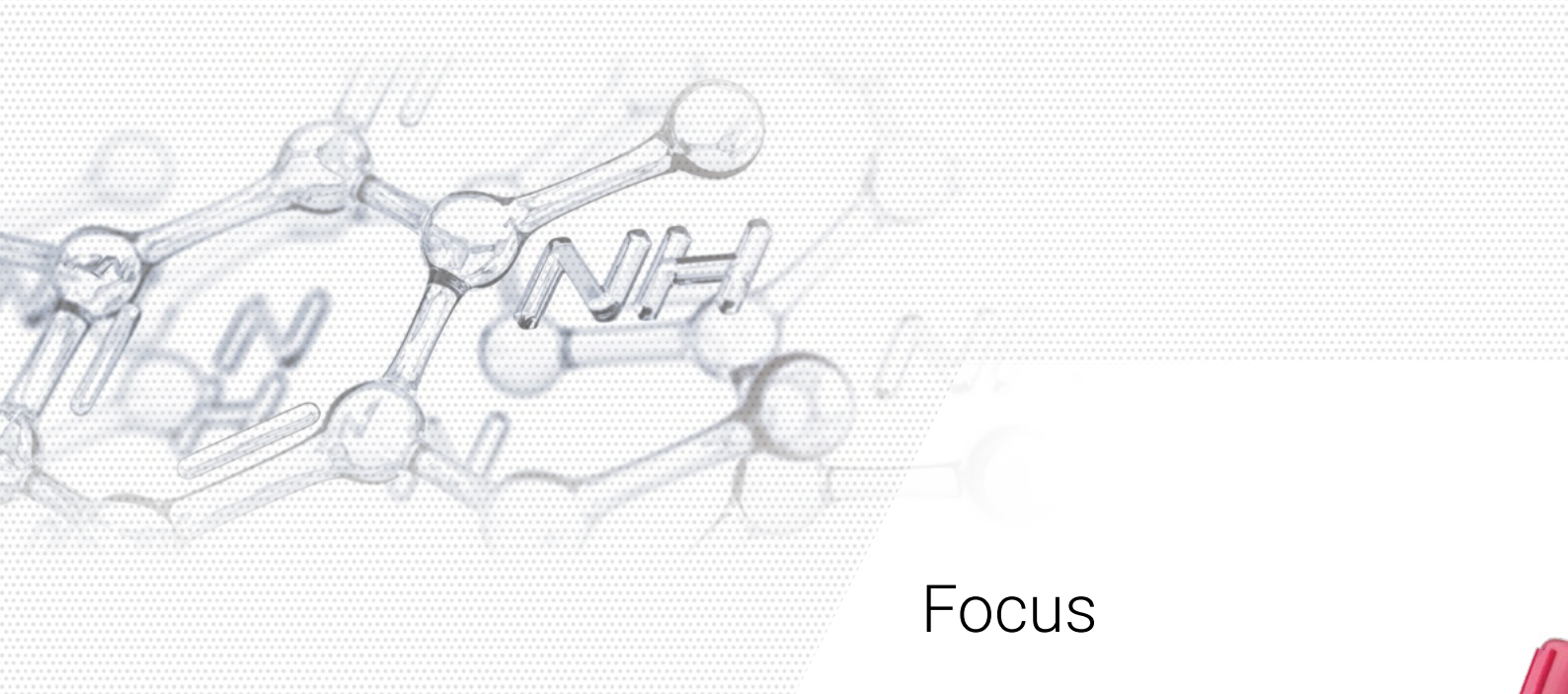
# Environment

At the **ITW Reagents** division, we are highly committed to protecting the environment and preserving surroundings. Consequently, we follow a strict environmental responsibility policy, and meet all legal requirements ensuring minimal impact from our activities on the environment.

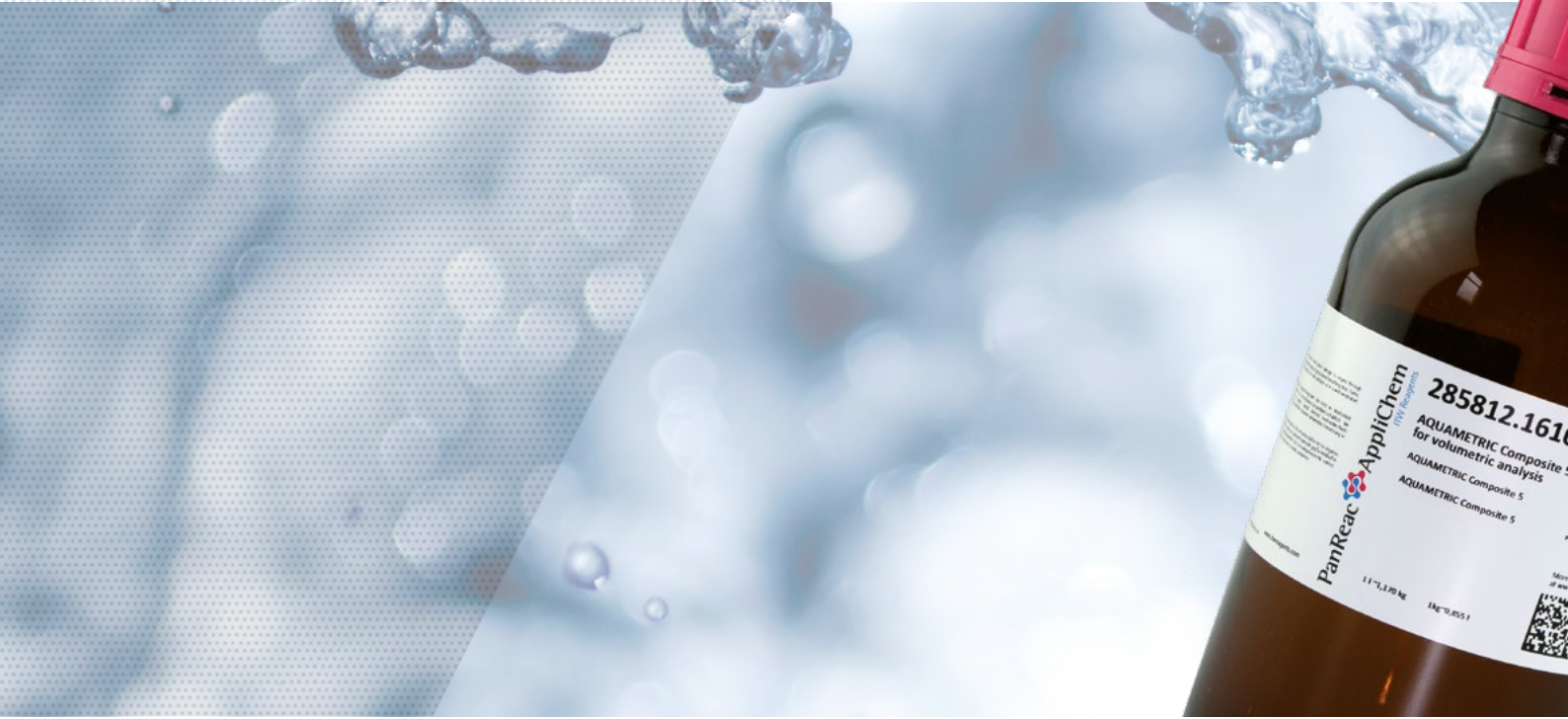
Based on the **ITW Group behavior principles**, we constantly control the whole lifecycle of our products and the legal compliance by our providers. We ensure monitoring thereof through regular audits and the certification of **Environmental Standard ISO 14001:2004**.







## Focus



Our products are active players in healthcare, nutrition, environment, energy efficiency, new technologies, and materials

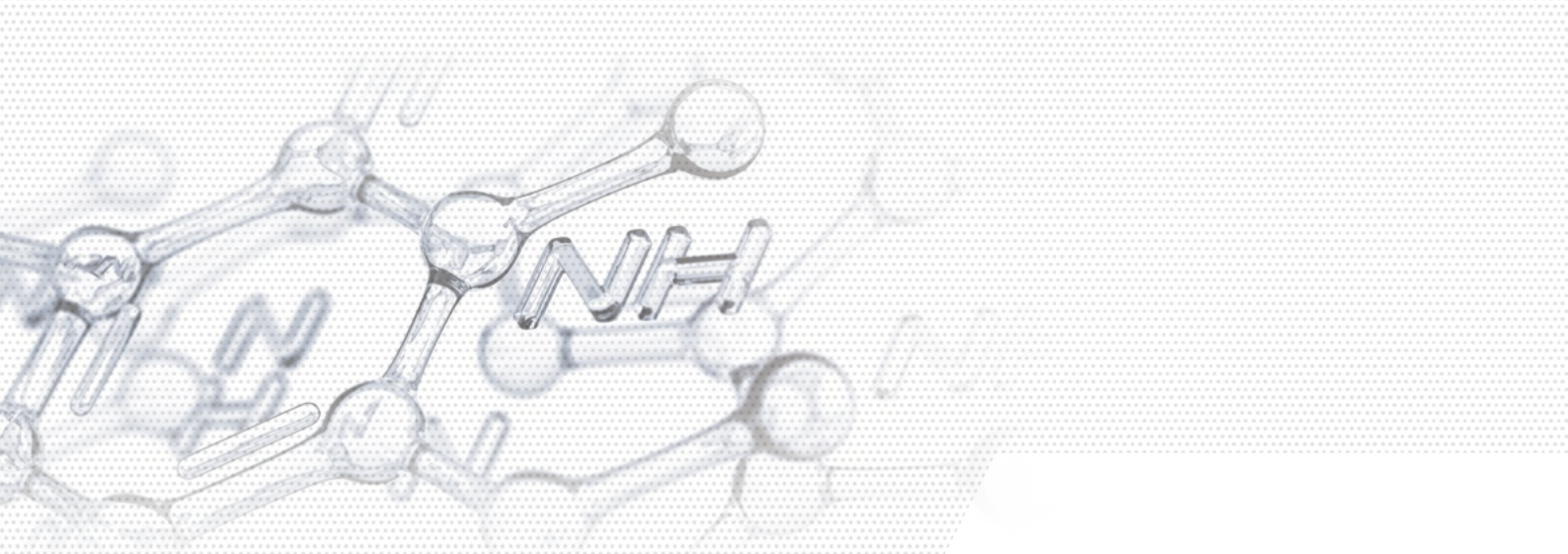


We are convinced that chemistry has an important role in making the urbanized world a better place to live. **Our commitment is to contribute with our products to innovative solutions aimed at improving people's quality of life, sustainable development and global solutions.**



**PanReac**   
**AppliChem**  
ITW Reagents





## We are Everywhere



We can say that almost all products subject to human manipulation have undergone chemical analysis that guarantees their physical and chemical properties. Food, agrifood, medicines, cosmetics ... and so many other products are subjected to chemical analysis. **Our reagents can be found in any quality control and research laboratory.**

The industry also demands not only chemicals and raw materials with the best quality and specifications but also with certificates and documents required by regulatory bodies. **Our raw materials take an important role in pharmaceutical and food industries.**

**PanReac**   
**AppliChem**  
ITW Reagents



# Laboratory Chemicals

In chemical analysis, it is essential to use reagents of adequate quality. The correct choice will depend on how accurate our result must be and the sensitivity limit of our method. We offer a wide product range of different qualities to select the appropriate quality based on the chemical analysis.

**Our range of Laboratory Chemicals include reagents for:**

---

## Analytical reagents

Reagents especially indicated for general analytical applications with guaranteed specifications.

Reagents according to ACS (American Chemical Society), ISO (International Organization of Standardization) or both.

Reagents that follow the requirements of the Pharmacopeias (Ph. Eur. and/or USP) as analytical reagent.

---

## Reagents for volumetric analysis

Ready to use Volumetric solutions and Concentrated Volumetric solutions.

Standards for standardization of titrated solutions.

Titration indicators for end-point detection by colour change.

---

## Reagents and solvents for general applications

Products of a suitable purity to be used as auxiliary reagent in chemical analysis.

Laboratory glassware cleaning detergents. **derQuim**

pH indicator papers.

---

## Reagents and solvents for HPLC

High purity reagents specially designed to be used in UHPLC, HPLC, UV-Vis, IR, MS in quality control and research laboratories.

---

## Reagents and solvents for GC

High purity reagents for pesticide residue analysis in the food industry and in the environmental control.

High purity solvents for residual solvent analysis by Headspace GC-MS in pharmaceutical products.

Derivatization reagents.

---







**PanReac**  
**AppliChem**  
ITW Reagents





---

## Reagents for metallic traces analysis

Ultra pure reagents for metallic traces analysis in the environment, quality control and research laboratories to be used in the instrumental techniques AAS, ICP-OES and ICP-MS.


---

## Analytical Standards


For AAS, ICP, UV-Vis, Ion Chromatography, pH, Titration, Karl Fischer, Conductivity, Turbidity, Colour, Redox, COD, TOC and TIC.

---

## Reagents and solvents for specific applications

Karl Fischer analysis reagents for water content determination. 

Kjeldahl analysis reagents for nitrogen determination.

Kits and reagents for wine analysis. 

Reagents and solvents for fat content analysis in dairy products.

ASTM reagents for analysis in the oil and metal industry.

Reagents and solvents for Organic synthesis.

---

## Clinical Diagnosis

Full range of products for anatomical pathology and clinical pathology, that includes histology, hematology, and microbiology, with the most commonly used reagents in the process of preparing samples for examination under the microscope.

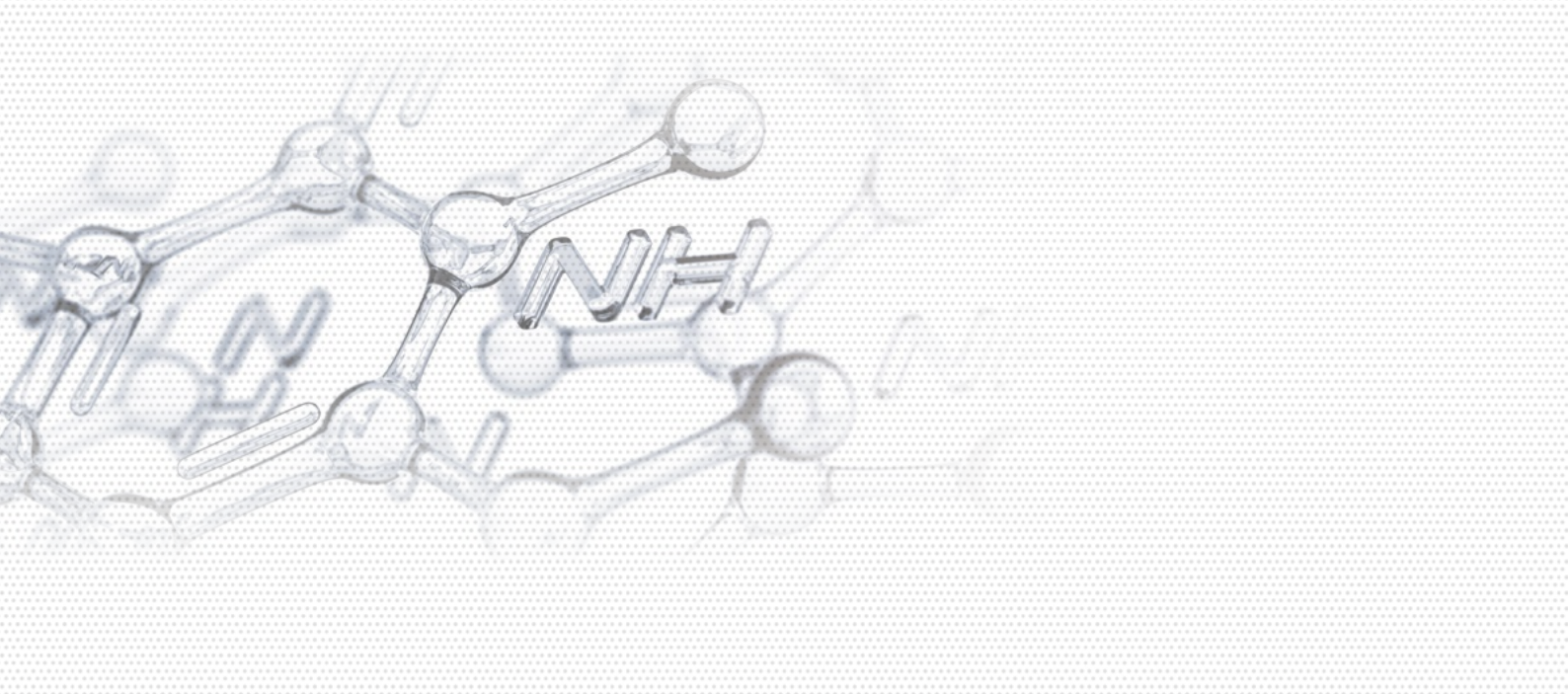
The majority of our products for Clinical Diagnosis are CE marked, in compliance with the provisions of the European Directive on products for “in vitro” diagnosis.

---

## Microbiology

The most important Culture Media, dehydrated and ready to use for water, food, pharma and environmental microbiological analysis, according to the most known standards as ISO, Ph. Eur. and USP.





We synthesize different biochemicals for use in biotech industry and research in biochemistry, cell biology, microbiology, and molecular biology. All products are strictly controlled to ensure their performance in each discipline.

**PanReac  
AppliChem**  
ITW Reagents

Centro de Biología Molecular Severo Ochoa (CSIC-UAM), Spain



# Laboratory Biochemicals

**Our range of Laboratory Biochemicals covers:**

---

## **Cell Biology / Cell Culture**

Wide range of antibiotics, antimycotics, amino acids, media, and supplements for generating individual culture design.

Chemicals and Biochemicals for prevention, detection, and elimination of mycoplasma.

Dyes and analytics for assays and detections during and after cell culture.

---

## **Protein Biochemistry and Electrophoresis**

Acrylamids and products for PAGE as one of the most commonly used technique in proteomics.

Detergents tested and specified for use in the proteomic field.

Assays, Inhibitors and supplements for analytical testing and experiments through and with proteins.

---

## **Nucleic Acid Biochemistry**

Decontamination from nucleic acids with the non-toxic, non-harmful, non-corrosive DNA/RNA-ExitusPlus™ technique.

Important enzymes for the work and preparation of nucleic acids.

Buffers, analytics and assays for the extraction, and work examination of specific nucleic acids.

---

## **General Biochemicals and Biological Buffers**

Material for buffers and prepared buffers for the general use in the bioscientific field.

Full range of detergents with different properties for a broad spectrum of experiments.

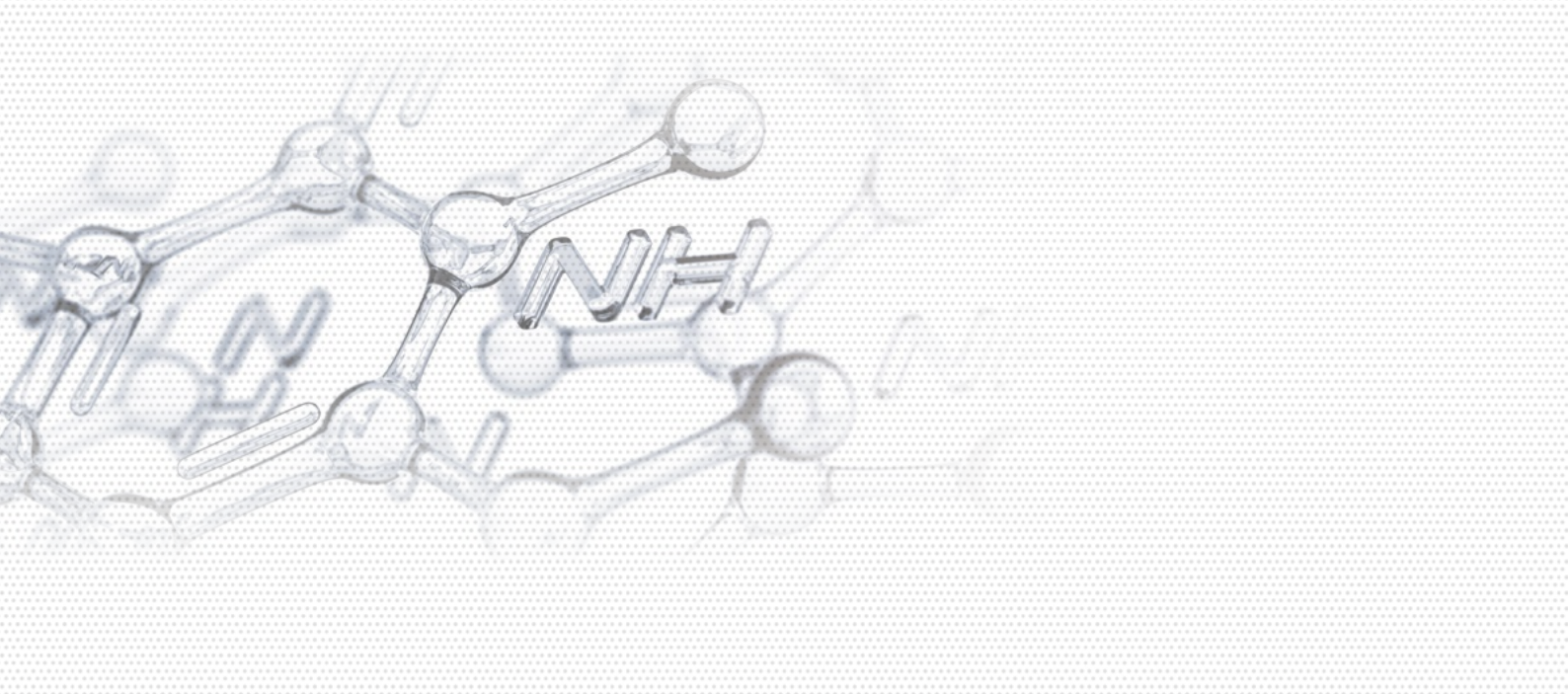
Reagents for biochemistry and molecular biology.

---

## **Special Biochemicals**

Special sugars and a compact set of vitamins and cofactors needed in some experiments.





PanReac  
AppliChem  
ITW Reagents



# Raw Materials for Production

---

## **Pharma production / excipients**

Raw materials to be used in manufacturing processes or as excipients in the final formulation. They ensure the compliance of the specifications defined in the Ph. Eur. and USP, among other pharmacopoeias. They come along with documents and certificates required by regulatory bodies.

---

## **Bioprocess**

Range of products for processes such as proteins precipitation or protein purification. Our bioprocess range also includes products to manufacture your own culture media.

---

## **Food additives**

Food additives adhered to the Food Chemicals Codex (FCC) specifications, as well as those stipulated by the European community. They are produced according to strict quality and security standards (ISO and HACCP).

---

## **API's synthesis**

Solvents to be used in API's synthesis and reagents and intermediates with low content of trace metals to be used at synthesis processes.

---

## **Diagnostics**

Products for manufacturing of diagnostic kits for blood, tissue and other patient samples.



# Excellence

Our products are strictly controlled in our laboratories and meet the highest quality requirements. An **Integrated Management System** is implemented in all activities and processes.



# Service & Benefits

**Exceptional know-how** and a wide range of chemicals and biochemicals for a great diversity of applications.

**European production** committed to corporate social responsibility (CSR).

**Efficient global distribution network** to export our products worldwide to more than 50 countries.

**Qualified management team** fully committed to our business project.



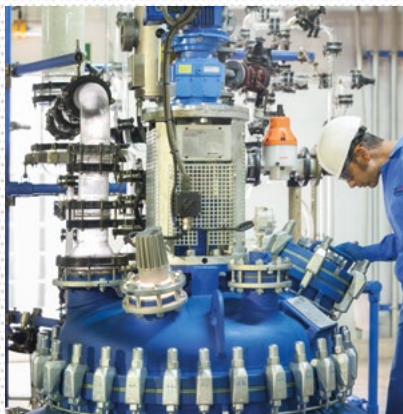








A174,EN;202310



**AppliChem GmbH**

Ottoweg 4 · DE-64291 Darmstadt · Germany · Phone +49 6151 9357 0 · Fax +49 6151 9357 11  
[info.de@itwreagents.com](mailto:info.de@itwreagents.com)

**ITW Reagents S.R.L.**

Corso Milano, 31 · I-20900 Monza (MB) · Italy · Phone +39 039 9530 360 · Fax +39 039 9530 361  
[info.it@itwreagents.com](mailto:info.it@itwreagents.com)

**Panreac Química S.L.U.**

C/ Garraf 2, Polígono Pla de la Bruguera · E-08211 Castellar del Vallès · (Barcelona) Spain  
Phone +34 937 489 400 · Fax +34 937 489 401  
[info.es@itwreagents.com](mailto:info.es@itwreagents.com)

[itwreagents.com](http://itwreagents.com)

