

## Hematoxylin Stains

In histopathological and cytological laboratories, multiple stains and techniques are often used for clinical diagnosis. Of these stains, **Hematoxylin-Eosin (HE)** is the most routinely used. The reason is the great capacity of this technique to obtain chromatic variants combined with the excellent definition of the nuclei propitiated by hematoxylin. There are many varieties of hematoxylin stains, the best known being **Harris, Carazzi, Mayer and Weigert**.

Hematoxylin has to be oxidized to hematin combined with a metallic ion, usually aluminum so that they can dye.





Hematoxylin is classified as progressive and regressive. Progressive hematoxylin usually has a lower concentration and stains chromatin. Their intensity depends on the time of exposure to the stain. Regressive stains dye nuclear and cytoplasmic structures and excess staining must be removed in a washing process.

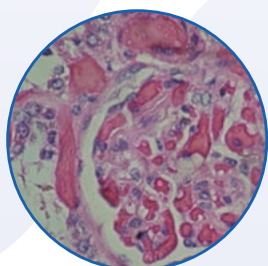


### Main advantages

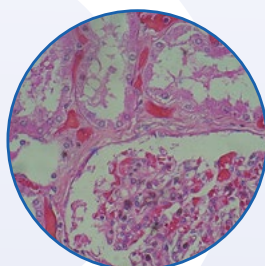
- Solutions ready to use
- Better contrast and greater number of samples
- CE-IVD mark

### PanReac AppliChem's Hematoxylin guide

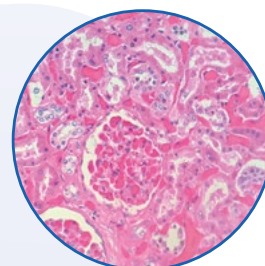
Name	Type of Stain	Hematoxylin content	Colors	Notes	Application
<b>Harris</b> 	Regressive	500 mg H / 100 ml Contains mercury	Nuclei: intense blue Cytoplasm and matrix: different shades of pink to violet	The most frequently used hematoxylin for routine HE staining	HE stains Cytology and Histology
<b>Harris modified</b> 	Regressive	500 mg H / 100 ml Mercury free	Nuclei: blue Cytoplasm and matrix: different shades of red and pink	Environmentally friendly and safe	HE stains Cytology and Histology
<b>Carazzi's</b> 	Progressive	100 mg H / 100 ml	Nuclei: light blue-violet Cytoplasm and matrix: different shades of pink	Pale and precise nuclear staining	HE stains Cytology and Histology
<b>Mayer's</b> 	Progressive	100 mg H / 100 ml	Nuclei: dark blue to purple Cytoplasm and matrix: pink to red	Specific for counter-staining in cytochemistry. Alternative to Gill's Hematoxylin	HE stains Cytology PAS stain
<b>Weigert's A+B</b>	Regressive	500 mg / 100 ml	Nuclei: dark blue to black	Specific for nuclear staining in connective tissue stains	Masson's staining



**Harris**



**Carazzi**

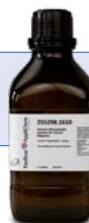


**Mayer**



## Hematoxylin

Product Name	Code	Package
Hematoxylin 1-hydrate (C.I. 75290) for clinical diagnosis	251344.1604	5 g
	251344.1606	25 g
Carazzi's Hematoxylin solution for clinical diagnosis	255298.1610	500 ml
	255298.1212	2.5 L
Harris Hematoxylin solution for clinical diagnosis	253949.1610	500 ml
	253949.1611	1000 ml
	253949.1612	2.5 L
Harris Hematoxylin modified solution for clinical diagnosis	256991.1610	500 ml
	256991.1212	2.5 L
Mayer's Hematoxylin solution for clinical diagnosis	254766.1610	500 ml
	254766.1211	1000 ml
Weigert's Hematoxylin solution A for clinical diagnosis	253453.1210	500 ml
Weigert's Hematoxylin solution B for clinical diagnosis	253454.1210	500 ml



## Other related stains

Product Name	Code	Package
Eosin for fast staining (Panoptic No. 2) for clinical diagnosis	253999.1210	500 ml
	253999.1212	2.5 L
Eosin Yellowish (C.I. 45380) for clinical diagnosis	251299.1606	25 g
Eosin Yellowish alcoholic solution 1% for clinical diagnosis	256879.1210	500 ml
	256879.1212	2.5 L
Eosin Yellowish hydroalcoholic solution 1% for clinical diagnosis	251301.1609	250 ml
	251301.1211	1000 ml
Masson's Trichrome Kit for clinical diagnosis	256692.0922	Kit
Papanicolaou's Solution EA 50 for clinical diagnosis	253594.1610	500 ml
	253594.1611	1000 ml
	253594.1612	2.5 L
Papanicolaou's Solution OG 6 for clinical diagnosis	253892.1610	500 ml
	253892.1611	1000 ml
	253892.1612	2.5 L



IP-056EN

**AppliChem GmbH**  
 Ottoweg 4  
 DE-64291 Darmstadt  
 Germany  
 Phone +49 6151 9357 0  
 Fax +49 6151 9357 11  
[info.de@itwreagents.com](mailto:info.de@itwreagents.com)

**Nova Chimica Srl**  
 Via G. Galilei, 47  
 I-20092 Cinisello Balsamo  
 (Milano) Italy  
 Phone +39 02 66045392  
 Fax +39 02 66045394  
[info.it@itwreagents.com](mailto:info.it@itwreagents.com)

**PanReac Química SLU**  
 C/ Garraf 2, Polígono Pla de la Bruguera  
 E-08211 Castellar del Vallès  
 (Barcelona) Spain  
 Phone +34 937 489 400  
 Fax +34 937 489 401  
[info.es@itwreagents.com](mailto:info.es@itwreagents.com)

