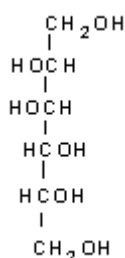
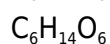
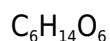


**PRODUCT CODE: 142067****D(-)-Mannitol (USP, BP, Ph. Eur.) pure, pharma grade**

M.= 182,17

CAS [69-65-8]

EINECS 200-711-8

TARIC 2905 43 00 00

**SYNONYMS:** Cordycepic Acid, D-Mannite**PHYSICAL DATA:** Small crystals, White, Soluble in water 156 g/l at 18 °C M.P.: 166 °C • pH(100g/l)5 - 7 •**BIBLIOGRAPHY:** Merck Index **12**, 5.788 13, 5.769 Sax **HER000** • Beilstein **1**, **534 IV**, **2841** • BRN 1721898 • ACS **XI** • BP.**2018** • USP **42** • Ph. Eur. **8.0** (2014) 5.4 , 3975 **9.0** (2017) 5.4 , 3975 6.3 , 6.4 • F.C.C **10 11** • BOE **243**(8-10-2009) • Regulation (EU) n° 231/2012 •**HAZARDOUS:** RTECS: OP 2060000 • LD50 oral mus 22.000 mg/kg • LD50 oral rat 13.500 mg/kg • LD50 ipr mus 14.000 mg/kg**SPECIFICATIONS:**

Assay (calc. a.d.s.)

97,0 - 102,0 %

Identity :

Identity according to Pharmacopoeias:

passes test

Melting range	165-170°C
Specific rotation [α] <sub>D</sub> <sup>20</sup> c=8 (in B4O7Na <sub>2</sub> ·10H <sub>2</sub> O 10%)	+23 - +25°
<b>Maximum limit of impurities</b>	
Appearance of solution (Ph-Eur)	passes test
Appearance of solution (USP)	passes test
Alkalinity	0,006 meq/g
Insoluble matter in H <sub>2</sub> O	0,01 %
Loss on drying at 105°C	0,2%
Residue on ignition (as SO <sub>4</sub> )	0,1 %
Sugars Reducing(as C <sub>6</sub> H <sub>12</sub> O <sub>6</sub> )	0,1 %
Conductivity at 25°C (c=20% w/v in H <sub>2</sub> O)	20 uS.cm-1
Residual solvents (Ph.Eur/USP)	passes test
Related substances:	
D (-)-Sorbite	2,0 %
Isomalt + Maltitol	2,0 %
Unspecified impurities	0,10 %
Total impurities	2,0 %
Water (H <sub>2</sub> O)	0,5 %
Contamination Total combined yeast and moulds (TYMC)	100 cfu /g
Total aerobic microbial count (TAMC)	1000 cfu/g
Salmonella	absence/10g
Escherichia coli	absence/g
Ni	0,0001 %
Elemental impurities (ICH Q3D):	
Class 1	
Cd	0,5 ppm
Pb	0,5 ppm
As	1 ppm
Hg	1,5 ppm
Class 2A	
Co	5 ppm
V	10 ppm
Ni	1 ppm
Class 2B	
Tl	0,8 ppm
Au	10 ppm
Pd	10 ppm
Ir	10 ppm
Os	10 ppm
Rh	10 ppm
Ru	10 ppm
Se	15 ppm
Ag	15 ppm
Pt	10 ppm
Class 3	

Li	55 ppm
Sb	120 ppm
Ba	140 ppm
Mo	25 ppm
Cu	250 ppm
Sn	600 ppm
Cr	25 ppm

Ed.: 13 . Vig.: 14.06.2019 .

Prod.: 142067