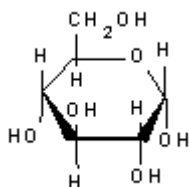
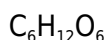
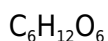


**PRODUCT CODE: 201341****D(+)-Glucose anhydrous (F.C.C.) food grade**

M.= 180,16 CAS [50-99-7] EINECS 200-075-1

TARIC 1702 30 50 10

SYNONYMS: Dextrose, D-Glucopyranose, Grape sugar**PHYSICAL DATA:** Small crystals, White, Soluble in water 900 g/l at 20 C M.P.: 146 C · pH6 - 7 ·**BIBLIOGRAPHY:** Merck Index **12**, 4.467 13, 4.472 Sax **GFG000** · Beilstein **31**, **83 IV**, **1**, **4302** · BRN 1724615 · ACS **XI** · BP.**2020** · USP **42** · Ph. Eur. **9.0** (2017) **10.0** (2020) 6.3 · F.C.C **11 12** · DAB 10 (1991) ·**HAZARDOUS:**RTECS: LZ 6600000 · LD L0 oral rbt 20.000 mg/kg · LD50 oral rat 25.800 mg/kg · LD50 ipr mus 18.000 mg/kg**SPECIFICATIONS:**

Assay (C ₆ H ₁₂ O ₆), calc. on the dried basis (of reducing sugar content, glucose equivalent)	99,5-100,5%
Specific rotation [α] 25/D	+52,6 - +53,2
Loss on drying , not more than	2,0%
Residue on ignition , not more than	0,1 %
Chloride (Cl) , not more than	0,018%
Sulphur Dioxide, not more than	0,002%

Starch
Arsenic (as As), not more than
Lead, not more than

passes test
1 ppm
0,1 ppm

Specifications F.C.C. 12

For use in foodstuffs according to F.C.C.

Ed.: 3 . Vig.: 15.01.2011 .

Prod.: 201341