



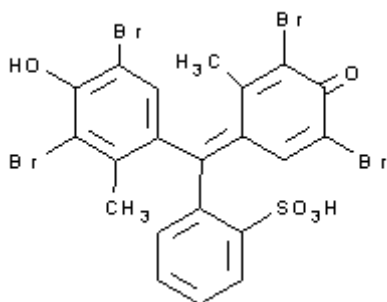
PRODUCT CODE: 281760

Bromocresol Green solution 0.04% for volumetric analysis

pH indicator 3,6 yellow; 5,4 blue

$C_{21}H_{14}Br_4O_5S$

$C_{21}H_{14}Br_4O_5S$



M.= 698,04 CAS [76-60-8]

TARIC 2934 99 90 90

SYNONYMS: 3,3',5,5'-Tetrabromo m-Cresolsulphonphthalein, BCG

PHYSICAL DATA: liquid, Clear, Dark green, Miscible with alcohol and water • D 20/4 0,979 •

BIBLIOGRAPHY:

HAZARDOUS: TLV-TWA (ethanol) 1.000 ppm1.880 mg/m³ VLA-ED (ethanol) 1.000 ppm1.910 mg/m³

WEIGHT/VOLUME INFORMATION: 1l~0,979 kg 1kg~1,021 l

COMPOSITION:

Bromocresol Green	40 mg
Ethanol absolute	17 ml
Sodium Hydroxide 0.1 mol/l	0,58 ml
Water (s.q.m)	100 ml

SPECIFICATIONS:

Identity :
Identity

passes test

Maximum limit of impurities

pH transition interval:

yellow

3,6

blue

5,4

Sensitivity test

passes test

Ed.: 4 . Vig.: 03.06.2014 .

Prod.: 281760